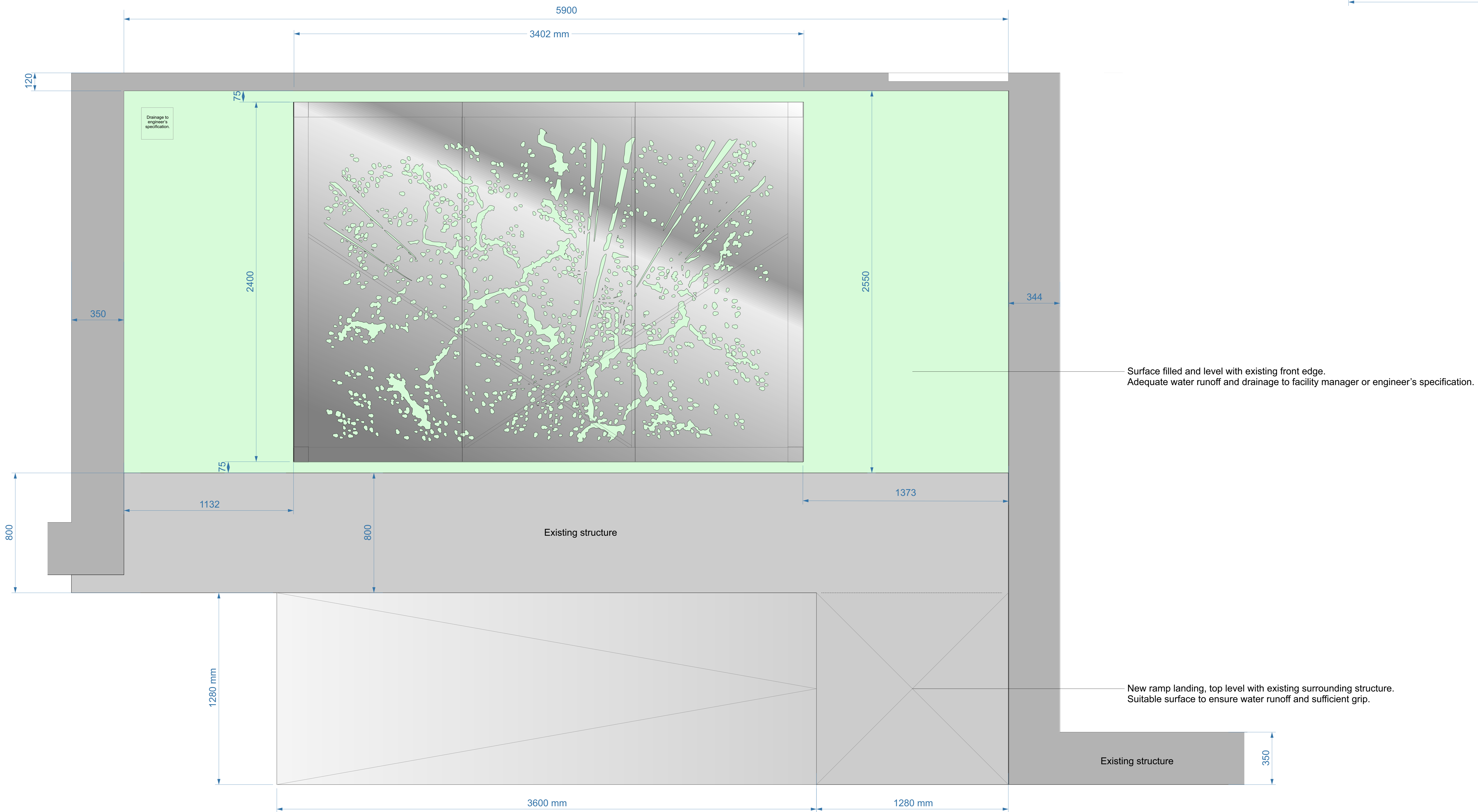
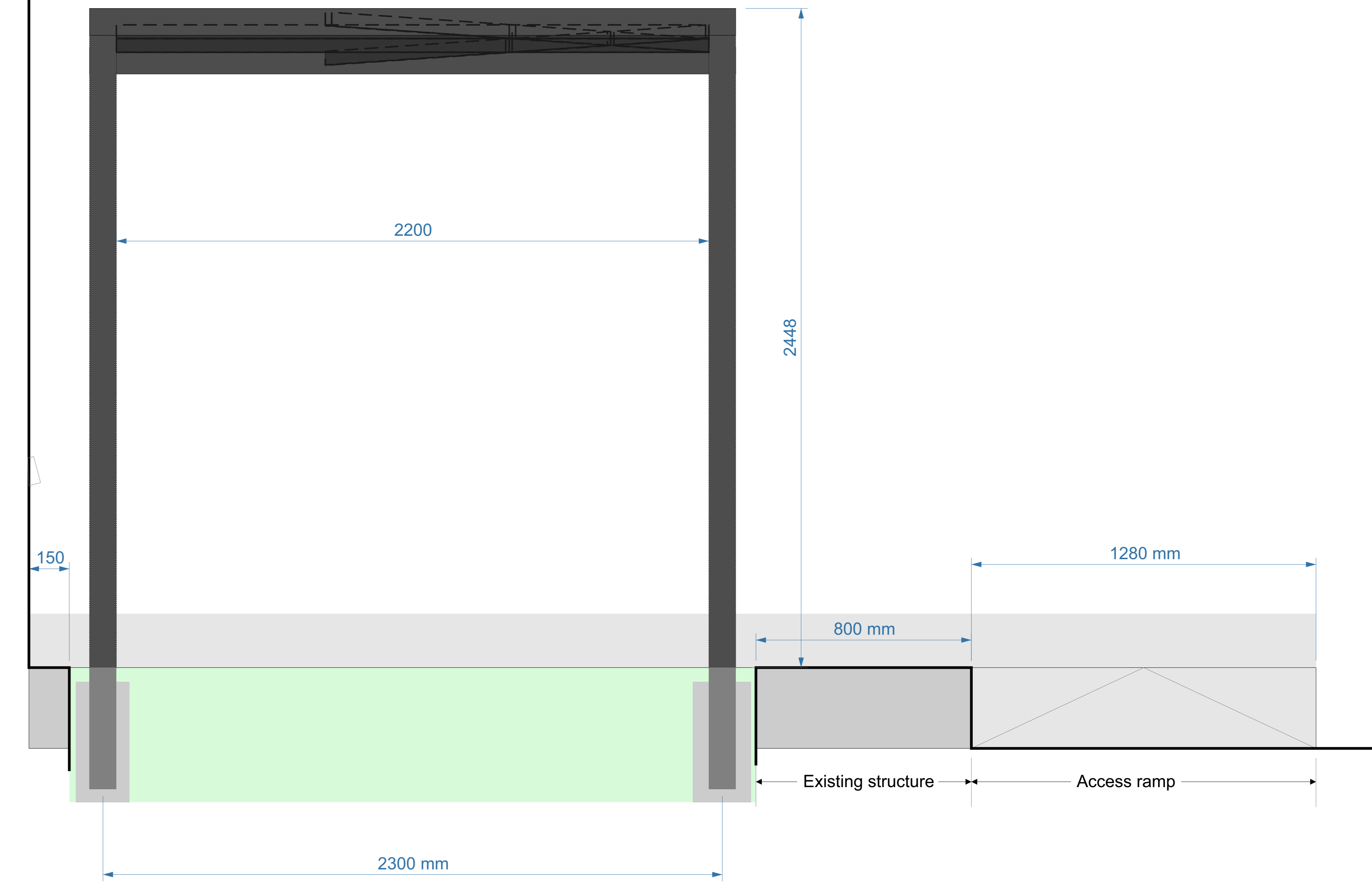
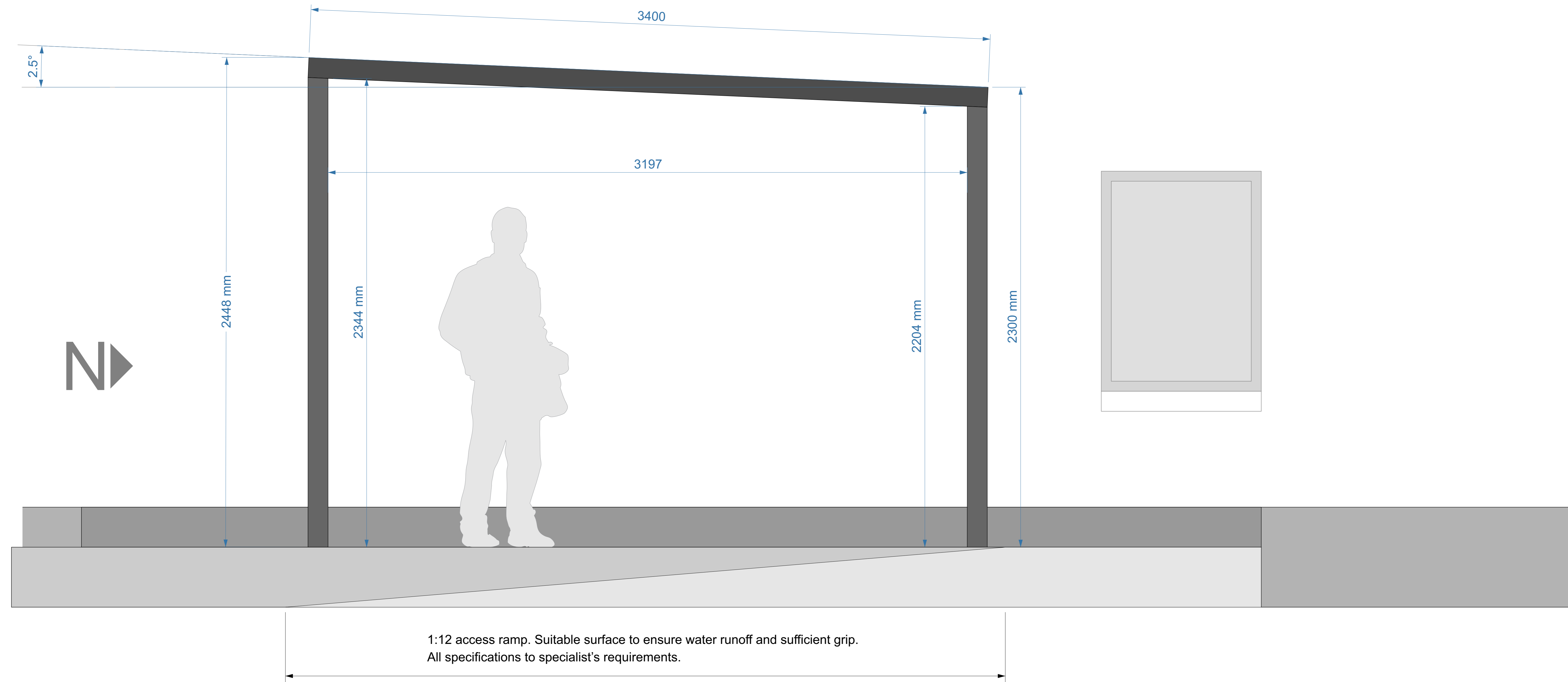


Summer Solstice awning

28Oct21 V01

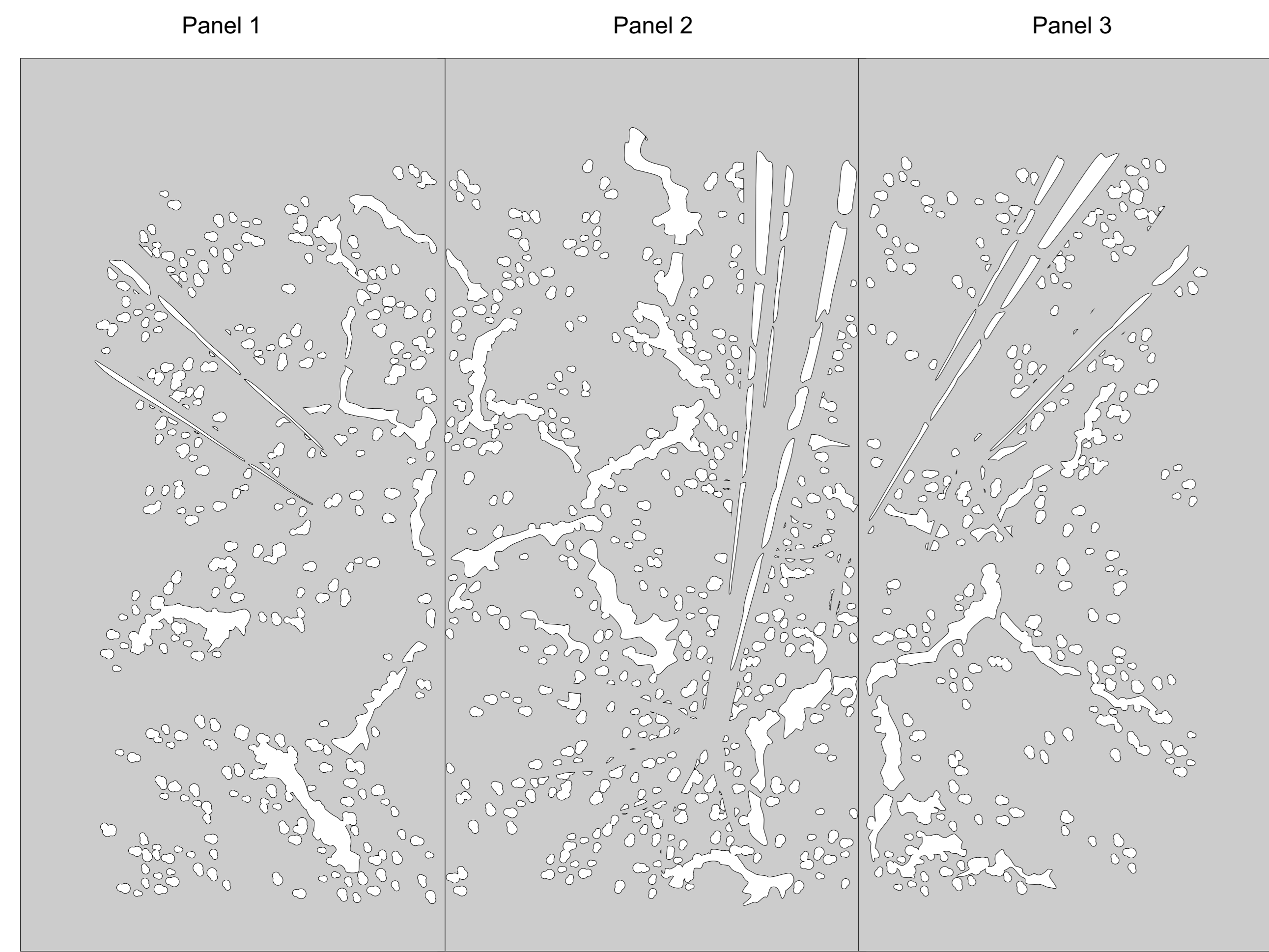


Summer Solstice awning

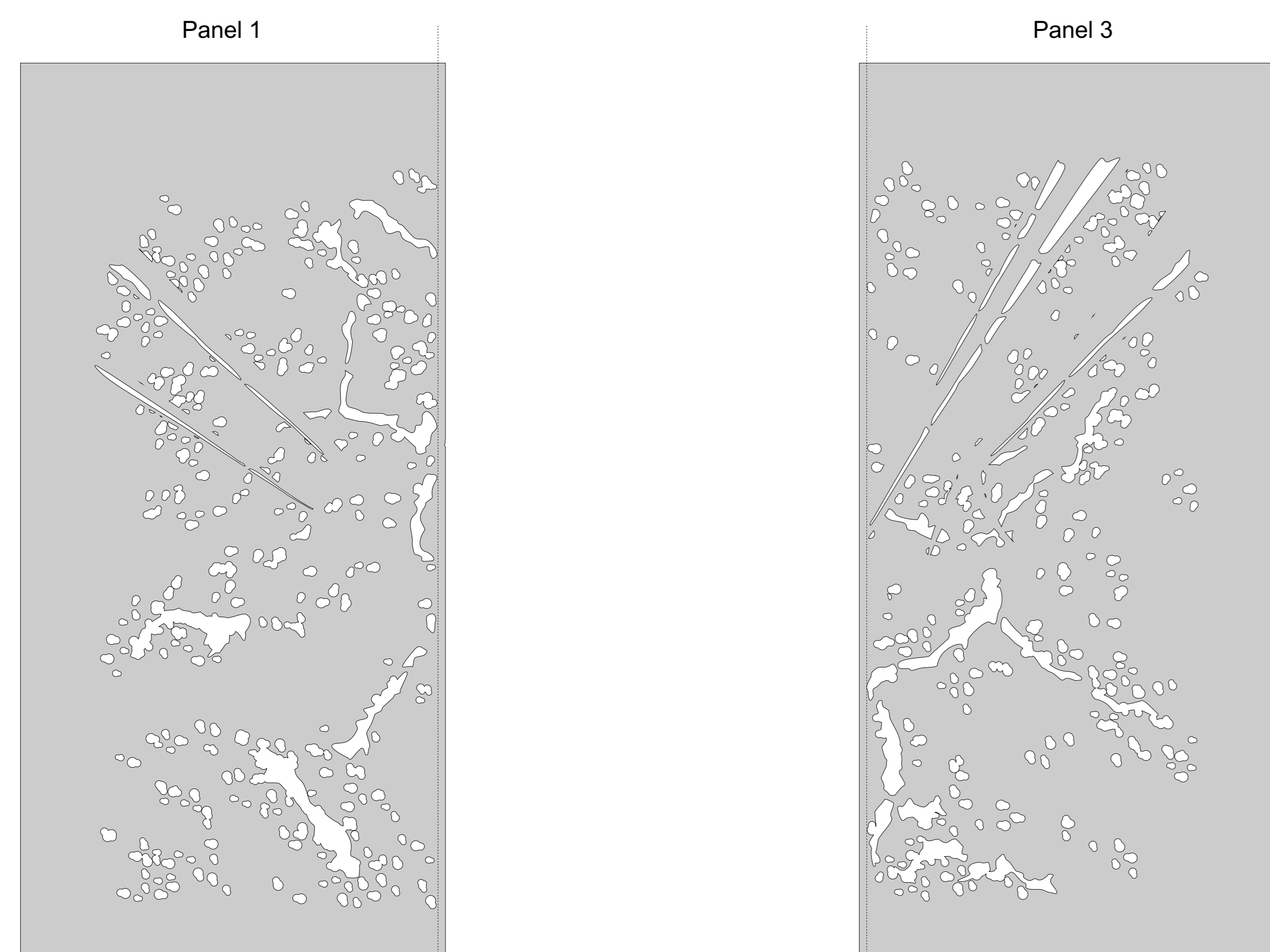
28Oct21 V01

Top cover panels

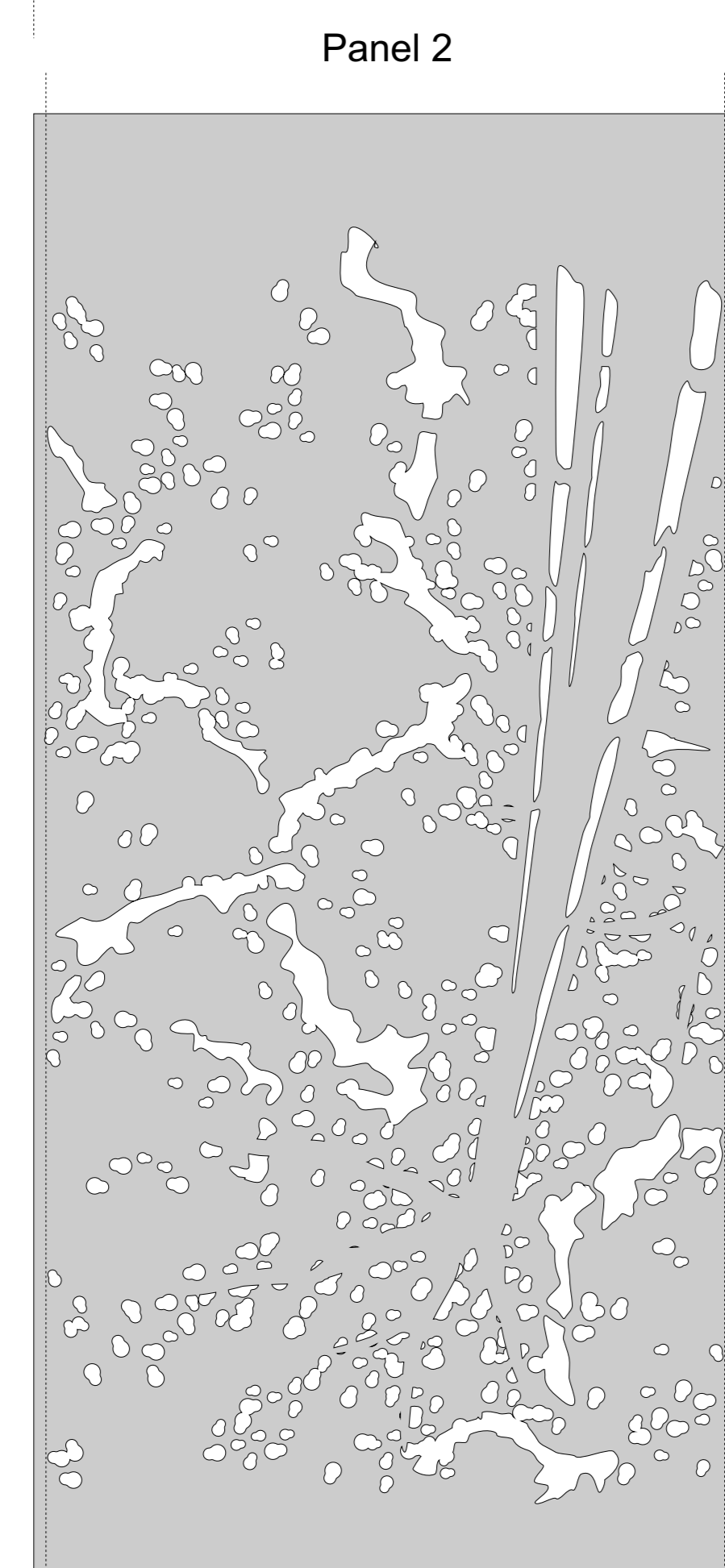
2mm mild steel sheet laser/waterjet cut.
 Panels overlap each other by 20mm, and riveted to support structure using suitable waterproof rivets and fasteners.
 Panels are pre-aged prior to final assembly.



Top View 1:10

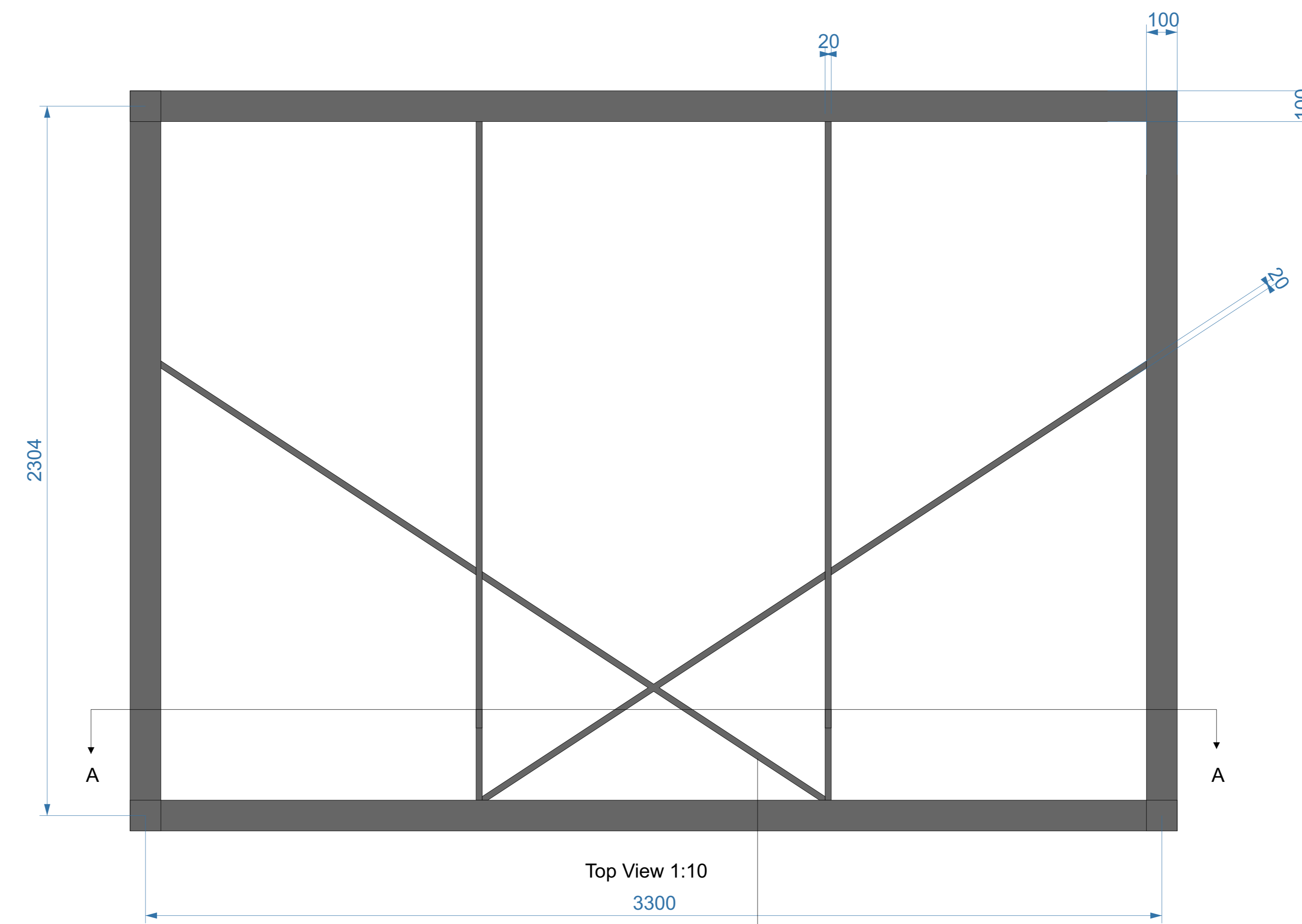


This is the top panel, with panel 2 and 3 underneath to ensure water runoff in direction of canopy slope.

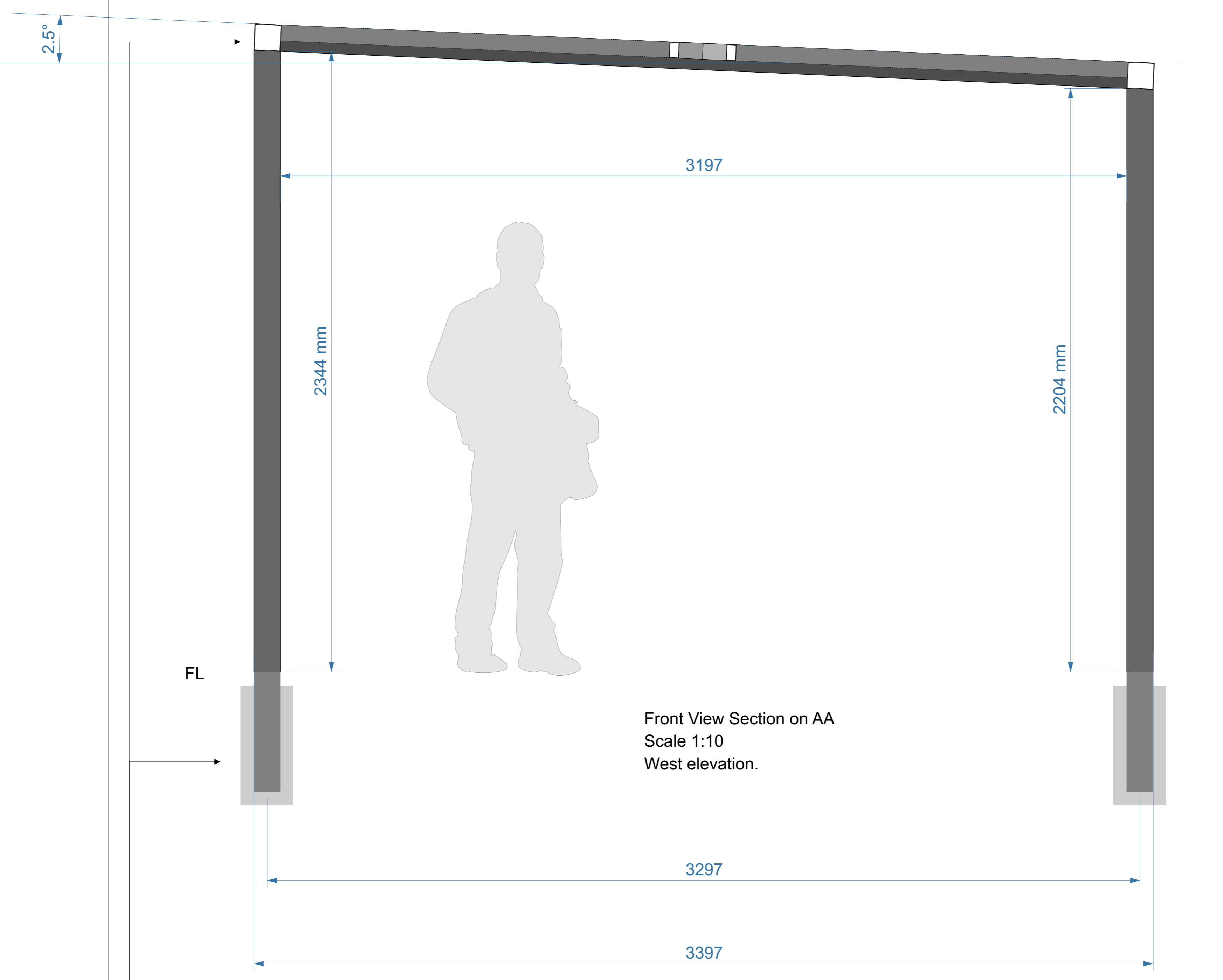


Top cover panels

2mm mild steel sheet laser/waterjet cut.
 Panels overlap each other by 20mm, and riveted to support structure using suitable waterproof rivets and fasteners.
 Panels are pre-aged prior to final assembly.

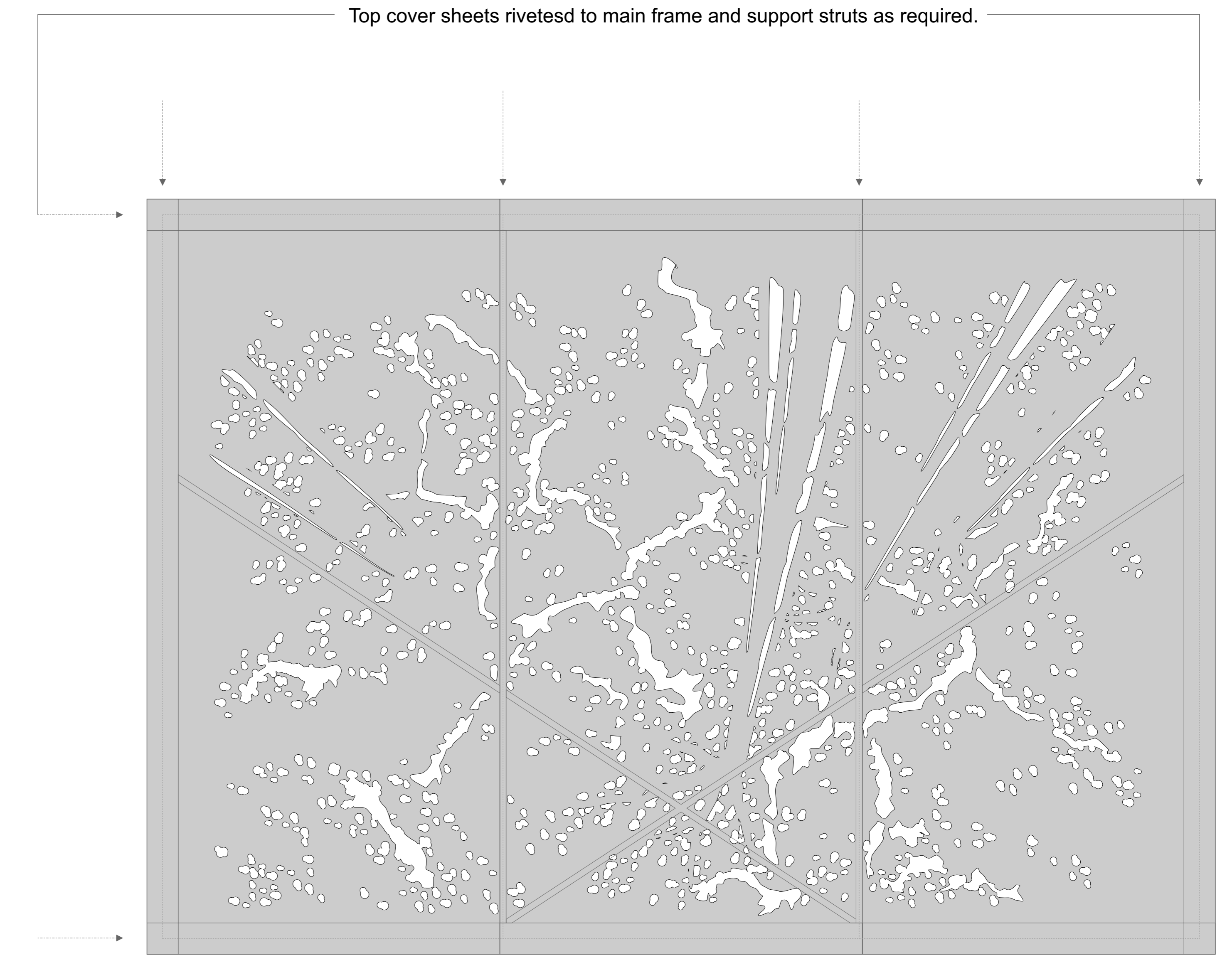


20 x 60 x 1.6mm Mid steel galvanised tube.
 100 x 100 x 2mm Mild steel galvanised tube.



Note: Back-filling, foundation and structural specifications to engineer's specification.

Final assembly



Top View 1:10